



 *The beginning of every good project.*

BROCHURE GM 2024

+24 YEARS

PROVIDING THE BEST
SPECIALIZED SERVICES
OF DIGITAL MAPPING AND
GEOMATICS



SUPERVISION TOPOGRAPHIC OF PROJECTS SERVICE



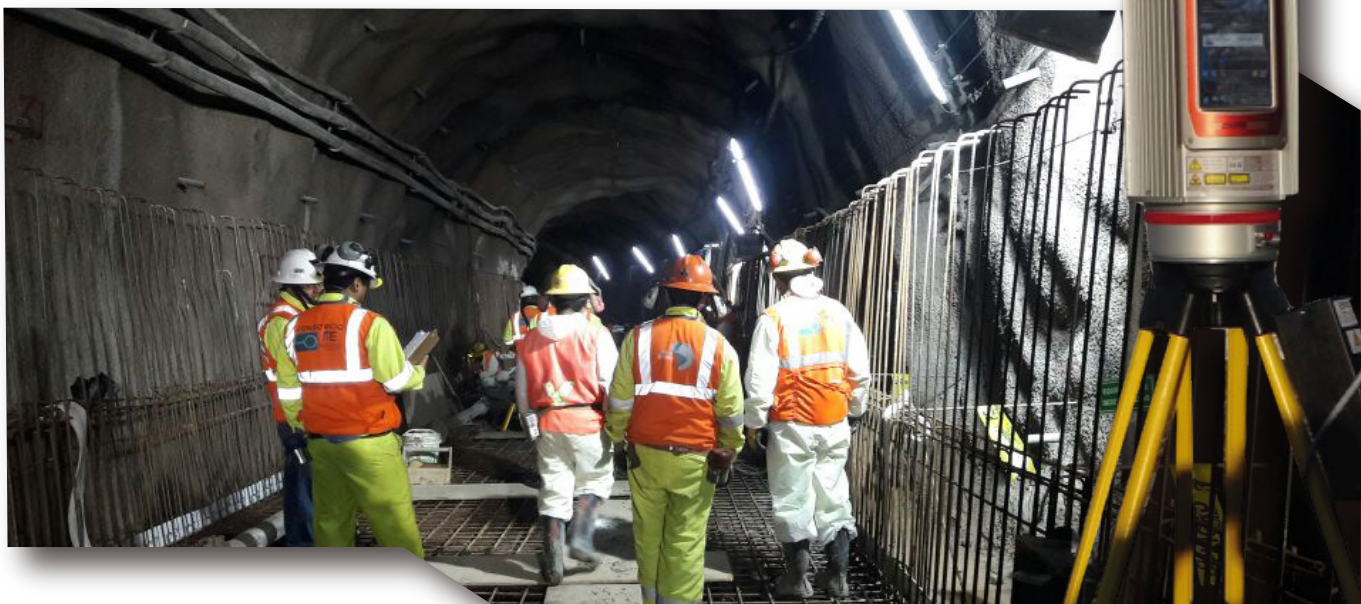
For the Supervision of construction projects we have multidisciplinary Surveying Crews, which are made up of High Precision measuring equipment and a group of qualified Surveying Professionals with extensive experience in the assurance and quality control of works of:

- ✔ Earth movements.
- ✔ Civil and concrete works.
- ✔ Mechanical assembly.
- ✔ Tunnels.
- ✔ Laying of high voltage lines.
- ✔ Others.

Equipment and Software:

We have high-precision equipment recognized worldwide: Leica, Trimble. And Professional Software with manufacturer's licenses:

- ✔ Leica, Trimble 1" and 2" total station.
- ✔ Trimble R10 dual-frequency differential GPS.
- ✔ RIEGL VZ-400 scanner.
- ✔ GeoSlam Mobile Scanner.
- ✔ USV Apache 4
- ✔ Wingtra One Drone



Main activities:



Tunnel topographic control: axis, cross sections, advance cubing, convergence measurement, precision traverse.



Topographic control of massive earth movement: Control of platform progress, Delimitation of types of material, Monitoring of DMEs, Monitoring of Quarries.



Civil and concrete works: Topographic control of foundations, foundations and anchor bolts.



Structural works: Alignment verification, Verticality, Squares, High voltage towers.



As Built 3D – 360 surveys, with laser scanner, for BIM modeling.



Construction of geodesic and polygonal networks
High precision for geometric control of
Projects.



Mechanical work: assembly
ball mill mechanic, SAG
mills, crusher primary,
conveyor belts, pulleys,
pumps, thickeners,
flotation cells,
tanks.



Constant Professional Technical Advice and Accompaniment in:

- ✔ Guidance on the appropriate use of technology and topographic survey methods to ensure the quality and precision of the information
- ✔ Review of measurements and valuations, generated by third parties in charge of the construction of the project
- ✔ Conceptual and detailed engineering redesigns according to the Red Line, RFIs and change management approved by the project.
- ✔ Preparation and audit of polygonals and high precision leveling.
- ✔ Audit of the calibration and collimation of the contractor's topographic equipment.
- ✔ Carry out three-dimensional modeling.
- ✔ Generation of Orthophotos.
- ✔ Editing and production of virtual flights.
- ✔ Others.

Technical office:

Our technical topography office has professionals graduates (3 years of technical academic training) and accredited by Autodesk.

Regards of:

- ✔ Review valuations generated by the builder.
- ✔ metered.
- ✔ Preparation of topographical plans for weekly and biweekly progress.
- ✔ Preparation of designs for the specialty of: earthworks, civil, structural and mechanical works.
- ✔ Carry out three-dimensional modeling.
- ✔ Generation of Orthophotos.
- ✔ Editing and production of virtual flights.



QUALITY, SAFETY, OCCUPATIONAL HEALTH AND ENVIRONMENT POLICY



We are a company dedicated to providing solutions digital cartography, aimed at meeting the requirements of our clients, achieving levels of precision that ensure your trust.

With a view to being sustainable over time, we prioritize the safety and health of our collaborators and carry out our operations in a non-invasive and environmentally responsible manner, committing to:

- ☑ Provide safe and healthy working conditions, encouraging the participation and consultation of staff and their representatives, and generating a culture of prevention of occupational risks, thus avoiding injuries and deterioration of health of our collaborators.



- ✔ Identify and eliminate hazards to the extent possible and reduce the risks to which our employees are exposed. collaborators.
- ✔ Work with highly trained professionals and cutting-edge technology to reduce the exposure and risk of personnel, as well as the environmental impacts that could be generated.
- ✔ Comply with legal requirements, technical standards and applicable standards of Quality, Safety, Health Occupational and Environmental Care.
- ✔ Protect the environment by identifying, evaluating and minimizing the environmental impacts produced by our operations, preventing pollution and impact on biodiversity and ecosystems in our labors.
- ✔ Continuously improve our management system, in order to optimize our environmental performance, strengthen the prevention of the safety and health of workers and the effectiveness of our processes.

Certifications:



Scope of ISO 9001:2015 Certification
“Geomatics, Topography, Photogrammetry, LiDAR, Assignment of Topographic Crews for Project Supervision”



OUR VALUES



TECHNOLOGY

Innovation in each of the processes of our services for the optimal development of projects.



QUALITY AND PRECISION

Develop each project with the highest quality standards in accordance with local and international technical standards.



TRUST

Commitment and confidentiality in the execution of projects for the full satisfaction of our clients.



+ 150 Customers Satisfied

06. OUR CLIENTS





+ 150 Customers Satisfied

06. OUR CLIENTS



PROVIAS Nacional





CONTACT

✉ info@globalmapping.biz

📞 T. (511) 226 - 2614 / +51 945651330

📍 Jr. Carlos Neuhaus Curl Pattern
(Ex Calle 31) No. 135 Of. 201 - 202
Urb. Corpac, San Isidro Lima, Peru.



