



 *The beginning of every good project.*

# BROCHURE GM 2024

# +24 YEARS

PROVIDING THE BEST  
SPECIALIZED SERVICES  
OF DIGITAL MAPPING AND  
GEOMATICS



# LiDAR SERVICE





We carry out LIDAR flights, with a high density of terrain points from 1 to 100 per m<sup>2</sup> and even in mountainous terrain, with absolute precision of 5 cm vertically and 5 cm horizontally, with a minimum of field control and for scales less than 2000 without field control, with permanent link to the IGN network and satellite processing. In addition, we incorporate high spatial resolution color and infrared photography **from 3cm and 4 integrated bands**. On the other hand, it has a stabilized rotation system for better alignment of photographs and data; and with a pulse repetition frequency greater than 2,000kHz.

The LIDAR point cloud that is generated has multiple applications such as:



MDT and MDS for mining and civil surface modeling.



Inspection of overhead transmission lines.



Determination of volume of masses.



Urban and rural cadastre.



Temporal analysis of surfaces and change detection.



GIS applications.

Our LEICA Airborne Laser Scanner is capable of detecting an unlimited number of returns for each output laser pulse, obtaining a high density of LiDAR points, in a single flight mission. In addition, we incorporate a **150MP digital sensors in RGB and NIR** for high-resolution image capture.

For this specialized service we have:



Aircraft with autonomy greater than 6 hours that ensure missions in less time.

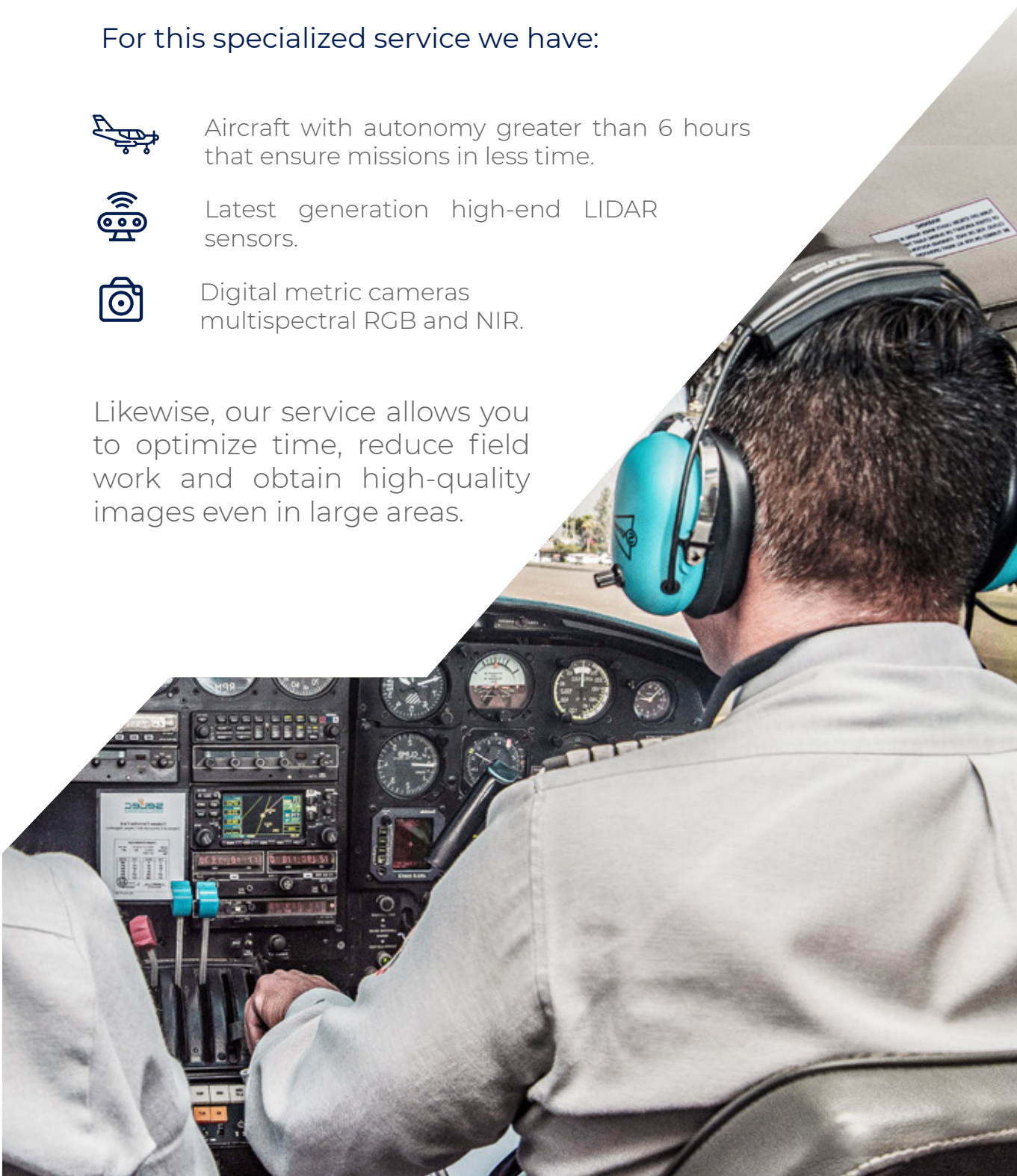


Latest generation high-end LIDAR sensors.



Digital metric cameras multispectral RGB and NIR.

Likewise, our service allows you to optimize time, reduce field work and obtain high-quality images even in large areas.



# PHOTOGRAMMETRY SERVICE



For this specialized service we have:



RGB and NIR multispectral Digital Metric Cameras.



IMU and GPS Navigation and Inertial Measurement Systems for Aerotriangulation and photogrammetric adjustment accurate with a minimum of control points required.



RPAS (Drone) systems, high resolution images are obtained in smaller dimensional areas.

The restitution of the images and their orthorectification allow the generation of 3D vector information and realistic modeling of the surface, which can be integrated into various infrastructure work environments, cadastre, CAD, GIS, simulations and virtual flights, for terrain recognition.

We have the best photogrammetric processing equipment and software capable of generating a true “True Orthophoto”, without verticality and geometry errors.



# TOPOGRAPHY SERVICE





This service carries out large-scale Topographic Surveys, where the topographic plan of surfaces and/or structures is obtained with high planimetric, altimetric and volumetric precision, for the development of basic engineering, detailed engineering, geological and geophysical studies, geometric design of roads, tunnels, dams, DMEs.

Likewise, they carry out dam monitoring activities, bathymetric surveying, measurement of drilling collars, 3D scanning of shafts, tunnel chimneys and establishment of geodetic networks by differential method.

Through our technology and specialized personnel we obtain products with high precision, image quality, speed and security, to meet the requirements and satisfaction of our customers.





## Applications:

- ✔ Surveys of natural lands.
- ✔ Development of basic engineering, conceptual engineering, and detailed engineering.
- ✔ Lifting of drilling collars.
- ✔ Geodetic networks.
- ✔ Rethinking.
- ✔ Monitoring of Dams and Dams

We represent the terrain in 3 dimensions, through measurements with high precision and speed equipment such as:

- ✔ 1" total stations.
- ✔ Long-range Terrestrial Laser Scanner.
- ✔ Differential GPS and RTK system.
- ✔ Latest generation software.
- ✔ RPAS (Drone) with personnel certified by the MTC.
- ✔ EUSV Apache 4 in hydrographic survey projects.

# SUPERVISION TOPOGRAPHIC OF PROJECTS SERVICE



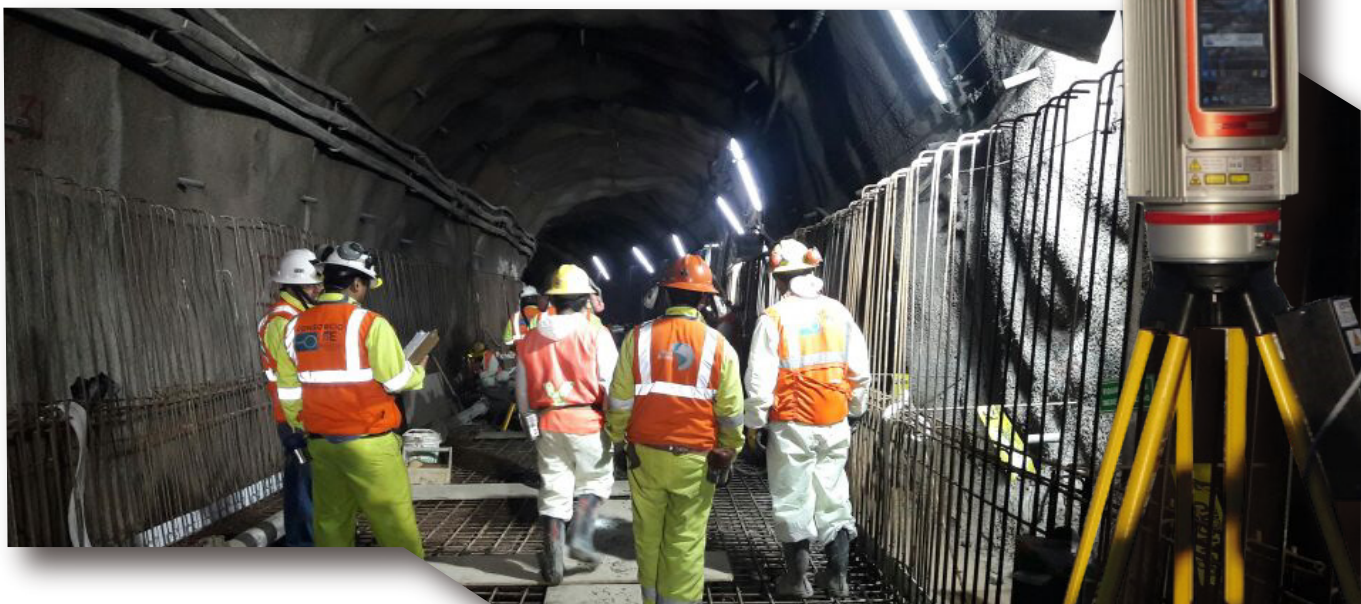
For the Supervision of construction projects we have multidisciplinary Surveying Crews, which are made up of High Precision measuring equipment and a group of qualified Surveying Professionals with extensive experience in the assurance and quality control of works of:

- ✔ Earth movements.
- ✔ Civil and concrete works.
- ✔ Mechanical assembly.
- ✔ Tunnels.
- ✔ Laying of high voltage lines.
- ✔ Others.

### Equipment and Software:

We have high-precision equipment recognized worldwide: Leica, Trimble. And Professional Software with manufacturer's licenses:

- ✔ Leica, Trimble 1" and 2" total station.
- ✔ Trimble R10 dual-frequency differential GPS.
- ✔ RIEGL VZ-400 scanner.
- ✔ GeoSlam Mobile Scanner.
- ✔ USV Apache 4
- ✔ Wingtra One Drone



## Main activities:



Tunnel topographic control: axis, cross sections, advance cubing, convergence measurement, precision traverse.



Topographic control of massive earth movement: Control of platform progress, Delimitation of types of material, Monitoring of DMEs, Monitoring of Quarries.



Civil and concrete works: Topographic control of foundations, foundations and anchor bolts.



Structural works: Alignment verification, Verticality, Squares, High voltage towers.



As Built 3D – 360 surveys, with laser scanner, for BIM modeling.



Construction of geodesic and polygonal networks  
High precision for geometric control of  
Projects.



Mechanical work: assembly  
ball mill mechanic, SAG  
mills, crusher primary,  
conveyor belts, pulleys,  
pumps, thickeners,  
flotation cells,  
tanks.



## Constant Professional Technical Advice and Accompaniment in:

- ✔ Guidance on the appropriate use of technology and topographic survey methods to ensure the quality and precision of the information
- ✔ Review of measurements and valuations, generated by third parties in charge of the construction of the project
- ✔ Conceptual and detailed engineering redesigns according to the Red Line, RFIs and change management approved by the project.
- ✔ Preparation and audit of polygonals and high precision leveling.
- ✔ Audit of the calibration and collimation of the contractor's topographic equipment.
- ✔ Carry out three-dimensional modeling.
- ✔ Generation of Orthophotos.
- ✔ Editing and production of virtual flights.
- ✔ Others.

### Technical office:

Our technical topography office has professionals graduates (3 years of technical academic training) and accredited by Autodesk.

### Regards of:

- ✔ Review valuations generated by the builder.
- ✔ metered.
- ✔ Preparation of topographical plans for weekly and biweekly progress.
- ✔ Preparation of designs for the specialty of: earthworks, civil, structural and mechanical works.
- ✔ Carry out three-dimensional modeling.
- ✔ Generation of Orthophotos.
- ✔ Editing and production of virtual flights.



# ENGINEERING DESIGNS SERVICE

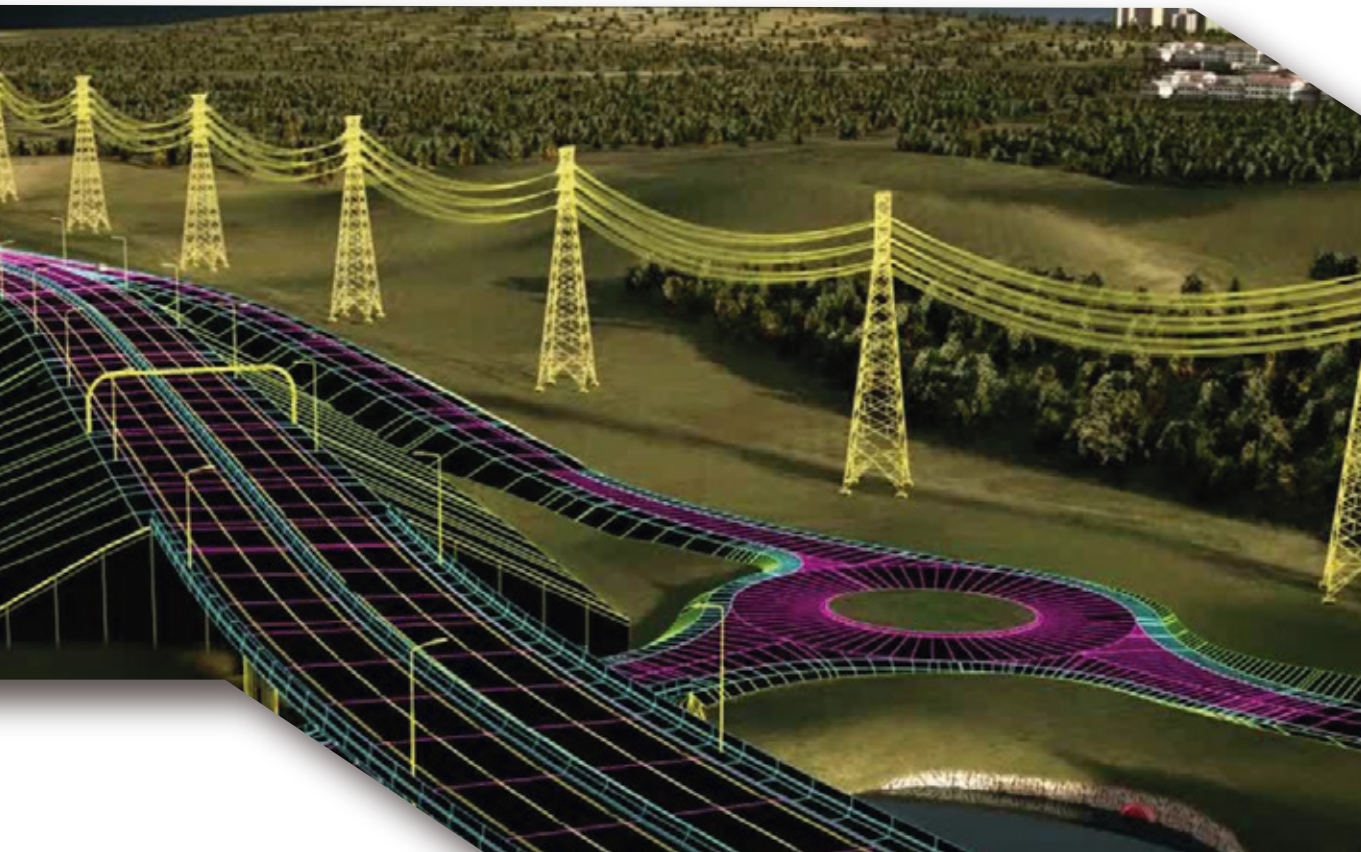


Engineering development at a basic and detailed level: geometric design of roads, accesses, pools, dumps, platforms, pipeline lines, channels and tunnels.

We have infrastructure and operational capacity that support our designs.



We analyze various scenarios and include technical opinions from various specialties to achieve the interrelation of the components and achieve the success of a comprehensive design.





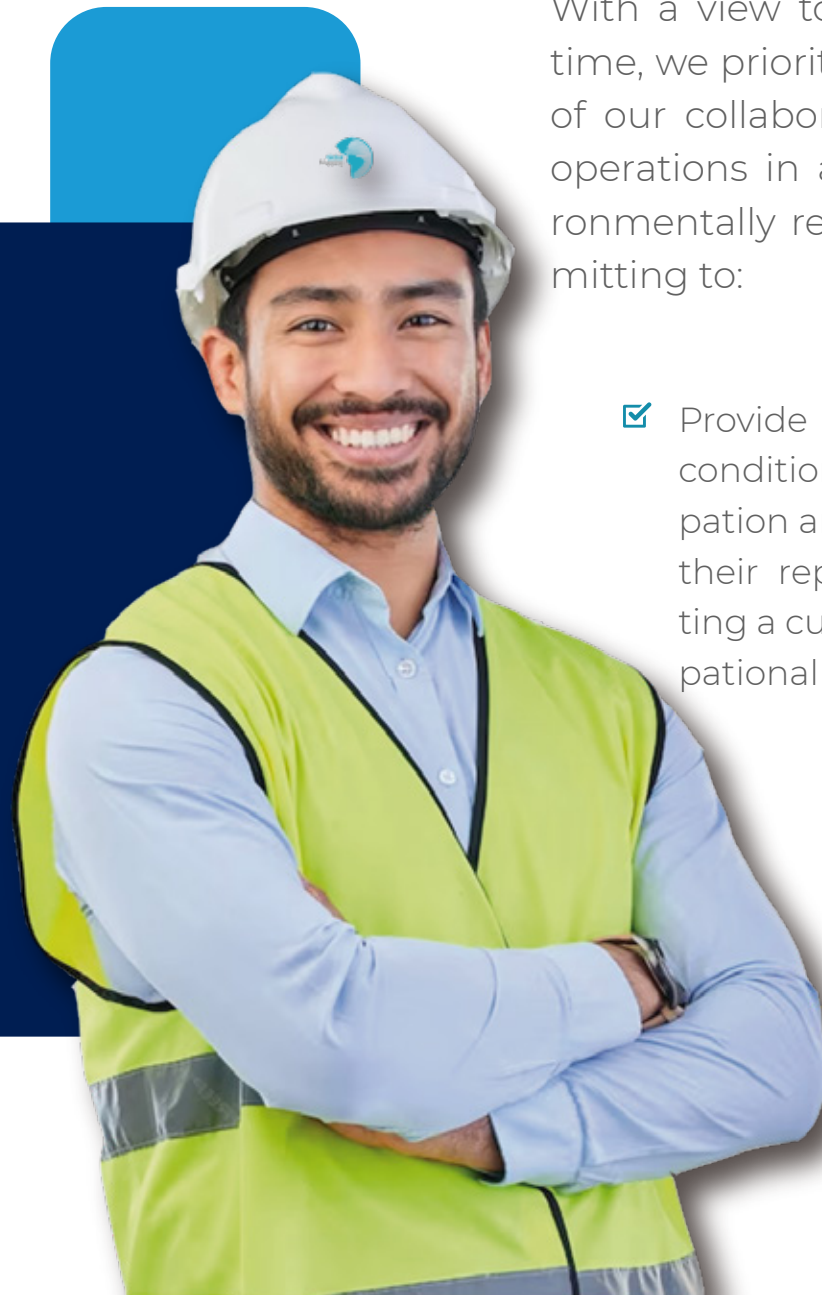
# QUALITY, SAFETY, OCCUPATIONAL HEALTH AND ENVIRONMENT POLICY



We are a company dedicated to providing solutions digital cartography, aimed at meeting the requirements of our clients, achieving levels of precision that ensure your trust.

With a view to being sustainable over time, we prioritize the safety and health of our collaborators and carry out our operations in a non-invasive and environmentally responsible manner, committing to:

- ☑ Provide safe and healthy working conditions, encouraging the participation and consultation of staff and their representatives, and generating a culture of prevention of occupational risks, thus avoiding injuries and deterioration of health of our collaborators.



- ✔ Identify and eliminate hazards to the extent possible and reduce the risks to which our employees are exposed. collaborators.
- ✔ Work with highly trained professionals and cutting-edge technology to reduce the exposure and risk of personnel, as well as the environmental impacts that could be generated.
- ✔ Comply with legal requirements, technical standards and applicable standards of Quality, Safety, Health Occupational and Environmental Care.
- ✔ Protect the environment by identifying, evaluating and minimizing the environmental impacts produced by our operations, preventing pollution and impact on biodiversity and ecosystems in our labors.
- ✔ Continuously improve our management system, in order to optimize our environmental performance, strengthen the prevention of the safety and health of workers and the effectiveness of our processes.

### Certifications:



Scope of ISO 9001:2015 Certification  
"Geomatics, Topography, Photogrammetry, LiDAR, Assignment of Topographic Crews for Project Supervision"



# OUR VALUES



## TECHNOLOGY

Innovation in each of the processes of our services for the optimal development of projects.



## QUALITY AND PRECISION

Develop each project with the highest quality standards in accordance with local and international technical standards.



## TRUST

Commitment and confidentiality in the execution of projects for the full satisfaction of our clients.



+ 150 Customers Satisfied

## 06. OUR CLIENTS





+ 150 Customers Satisfied

# 06. OUR CLIENTS



PROVIAS Nacional





## CONTACT

✉ [info@globalmapping.biz](mailto:info@globalmapping.biz)

📞 T. (511) 226 - 2614 / +51 945651330

📍 Jr. Carlos Neuhaus Curl Pattern  
(Ex Calle 31) No. 135 Of. 201 - 202  
Urb. Corpac, San Isidro Lima, Peru.



